

Radiotherapy Male Pelvic Treatment



Health

Illawarra Shoalhaven
Local Health District

Illawarra & Shoalhaven
Cancer Care Centres

In this booklet

General Information.....	2
Support services.....	3
My Radiotherapy care team	4

Radiotherapy consultation

Your pathway	7
What is radiotherapy.....	9
Treatment side effects	11

Radiotherapy planning

How to prepare for planning appointment.....	17
Radiotherapy planning appointment	19
Radiotherapy planning	23

Radiotherapy treatment

Radiotherapy treatment	25
------------------------------	----

Managing side effects

Managing side effects	31
General skin care.....	35

After radiotherapy

After radiotherapy	37
--------------------------	----

Frequently asked questions

Frequently asked questions	39
Resources.....	42

General information



This booklet will help you with your journey through radiation treatment. The information is general and may not always apply to you. Please talk with your treating team if you have any questions.

This document is a guide only and cannot cover every situation.



IMPORTANT PHONE NUMBERS

Illawarra
Cancer Care
Ph: 4222 5200

Shoalhaven
Cancer Care
Ph: 4428 7400

You will need to contact your doctor, clinical nurse consultant, or go to your nearest Emergency Department during your treatment if you have:

- Severe pain in the treatment area
- If you are unable or having difficulty passing urine
- A temperature of 38 degrees or higher

Need an interpreter?

Professional interpreters are available if you need help to communicate in English, or if you are deaf. Our staff can also ask for an interpreter. The staff will book an interpreter for you. Interpreter Services are free and confidential. You can bring a family member or friend with you to the appointment. If you need help to communicate it should be through a professional interpreter.

You can also call the Translating and Interpreting Service on **1800 24 72 72** if you need to speak to us before an appointment.

Support services



There are a number of services available to help support both you and your family.

- ❑ Counselling support for patients and carers affected by cancer
- ❑ Legal and financial assistance:
Cancer Council 13 11 20
www.canassist.com.au/
- ❑ Advance care planning/Advance care directive:
Making plans now for your future healthcare needs when you are no longer able to make decisions for yourself
- ❑ Travel & accommodation subsidy (IPTAAS):
If travelling more than 200km per week
www.enable.health.nsw.gov.au/services/ipaas
- ❑ Mobility parking scheme:
Go to the website, download the form, see your GP, and go to your nearest Service NSW office.
www.rms.nsw.gov.au/roads/using-roads/mobility-parking/documents-forms.html
- ❑ Practical help in the home:
My Aged Care 1800 200 422
Carer Gateway 1800 422 737
CANTEEN - support for young people 12-24 years.
- ❑ Centrelink - apply online for payments such as Jobseeker, Disability Support Pension, Carer Payment or Carer Allowance.

If you require any more information or help please ask staff

My radiotherapy care team



Radiation oncologist

Contact: _____

What they do:

A doctor who prescribes radiotherapy and organises your treatment.

Radiation oncology registrar

Contact: _____

What they do:

A doctor who is training to be an oncologist. They are always supervised by your radiation oncologist.

Clinical nurse consultant

Contact: _____

What they do:

A nurse with specialised knowledge of pelvic cancer who will help coordinate your care, provide information, referrals and support.

Radiation therapist

Contact: _____

What they do:

Specially trained to plan and deliver your treatment. They will also help support you through treatment.

Radiotherapy nurse

Contact: _____

What they do:

Specialise in caring for people having radiation therapy. They manage your side effects, and will help support you through treatment.

Stomal therapy clinical nurse consultant

Contact: _____

What they do:

A nurse with specialised knowledge of stomas who helps you manage and care for your stoma.

Psychologist

Contact: _____

—

What they do:

A specialist who provides psychological assessment and interventions for cancer patients, and where required, to families and carers.

Social worker

Contact: _____

—

What they do:

Provides counselling, support and information for you and your family. They can help with important conversations in planning for your future.

Dietitian

Contact: _____

—

What they do:

Advise and support you to maintain weight and nourishment.

Radiation oncology medical physicist

Contact: _____

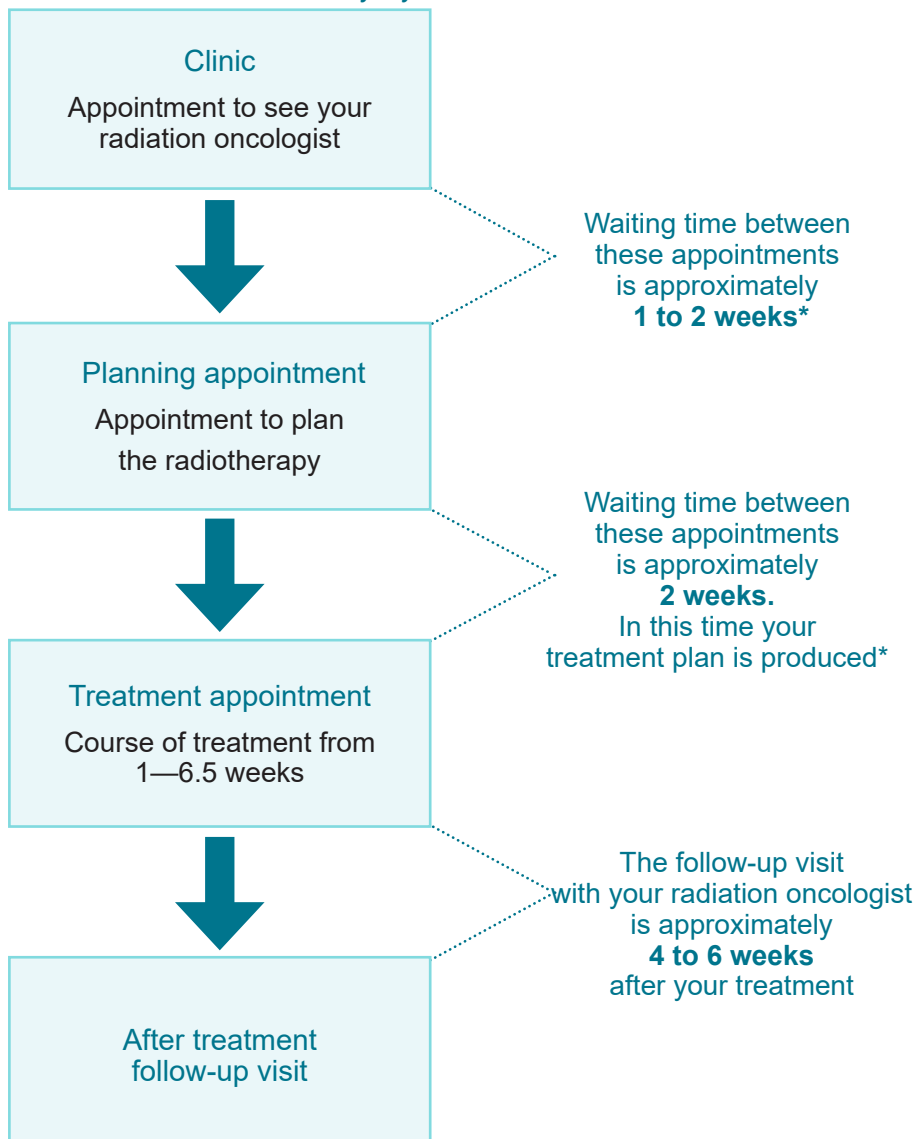
—

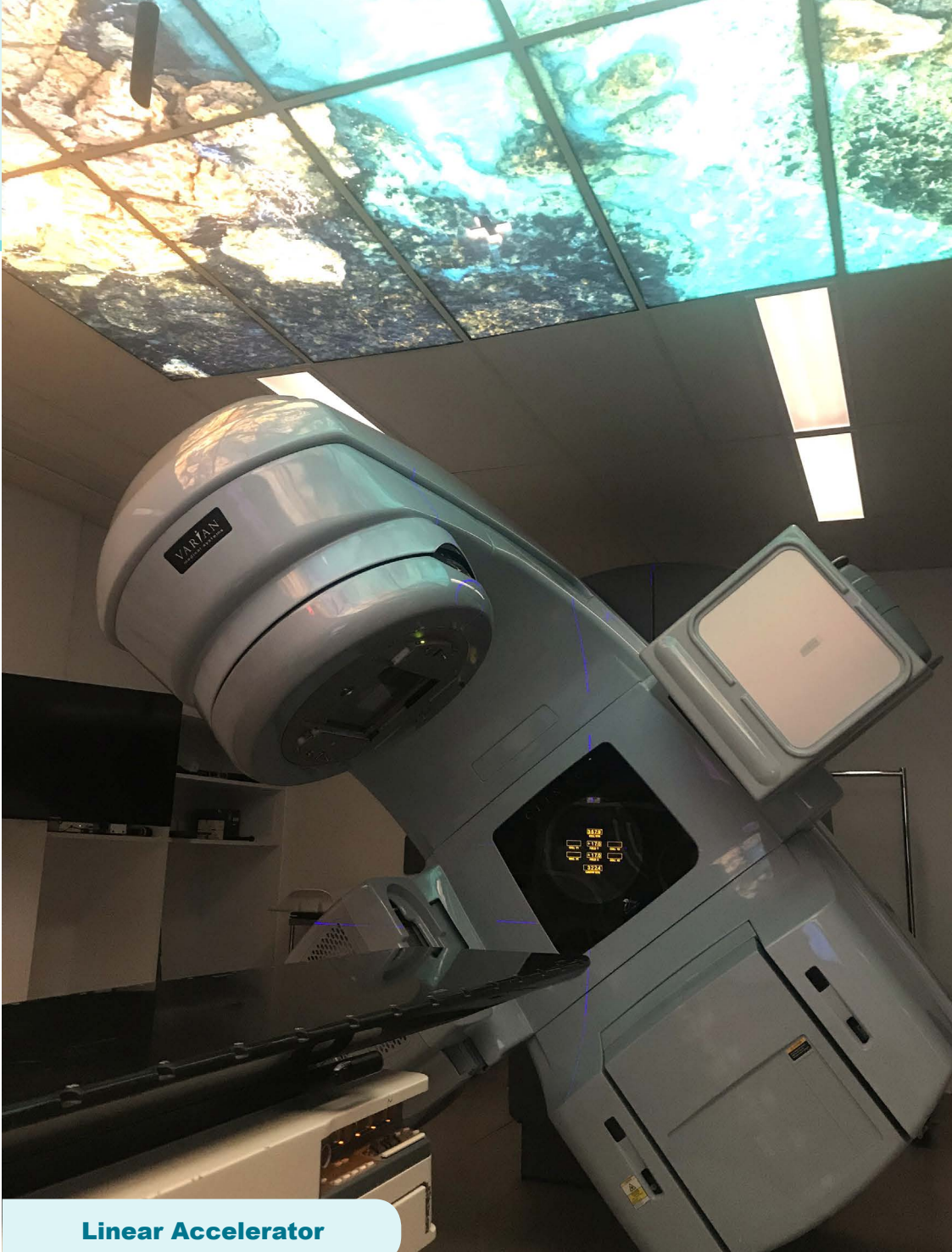
What they do:

Ensures that your treatment is delivered accurately and safely. You may see them at your planning appointment.

Your pathway

**The time could vary if you have other treatments to be coordinated*





Linear Accelerator

What is radiotherapy?



Radiotherapy uses x-ray beams to kill cancer cells.

A **linear accelerator** is a machine that delivers radiation to your body. It only gives radiation to the specific area that is being treated.

Your **radiation oncologist** will decide how much radiation you will receive and how many times you will receive it.

When deciding this, they will take into account:

- Your age
- Your overall health, including any other medical conditions you may have; and
- Details about your specific cancer obtained from scans, surgery and/or pathology of your cancer.

As part of your cancer treatment, radiotherapy can be given either:

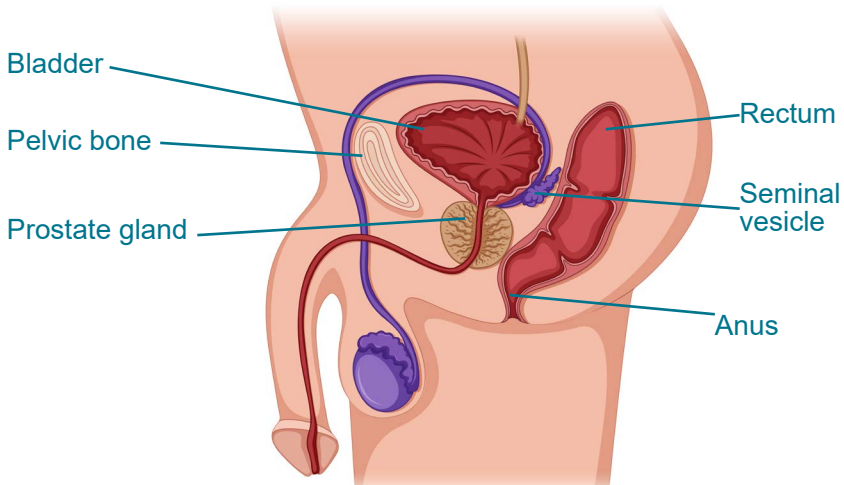
- Before surgery (e.g. rectal cancer)
- After surgery, or
- Instead of surgery (e.g. bladder or anal cancers)

Sometimes, chemotherapy may also be recommended during radiotherapy. In this case, you will be seen by a medical oncologist to see if chemotherapy is an appropriate treatment for you.

Your radiation treatment will be delivered to the pelvic area which is the lower part of the tummy (abdomen) between the hips.

In a man, this includes:

- The lower end of the large bowel (colon, rectum and anus) and part of the small bowel
- Prostate gland and seminal vesicles
- Bladder
- The pelvic bone
- Lymph nodes



Male anatomy

Sometimes, your radiation oncologist may recommend treating lymph nodes in your groin (inguinal nodes) as well as the pelvic area.

Only the areas within the radiation field will be affected by the radiation.

What side effects can the treatment cause?

Radiotherapy can cause both short- and long-term side effects. Short-term side effects occur 10 to 14 days into your radiotherapy treatment. Long-term side effects can occur months to years after your treatment has finished. Everybody reacts differently to the treatment and may not experience all side effects.

It is important that you stop smoking during radiotherapy. Smoking can increase the chance of side effects of the treatment as well as reduce the chances of being cured from your cancer. If you would like more information please talk to a member of your health care team.

Common short-term side effects

Bowel changes

You may:

- Feel the need to pass a bowel motion quickly
- Want to strain, whether or not you actually need to pass a bowel motion
- Have loose bowel motions
- Have a small amount of mucus or blood in your motion, or if you have a stoma you may pass mucous or blood from your rectum
- Have a sore or irritated back passage
- Notice that you pass a lot of wind.

Bladder changes

You may:

- Have some discomfort/burning when you pass urine
- Notice the flow of your urine might seem weaker
- Need to pass urine more often either during the day or at night
- Not have full control when passing urine (less common)
- Have blood in your urine (less common).

In rare cases, you may not be able to pass water at all - **this requires urgent medical treatment.**

Skin

Radiotherapy does not ‘burn’ the skin. The radiation disrupts the normal skin renewal process and it may look similar to a sunburn.

The skin in the treated area may become pink or red, or feel warm. It could be dry, itchy, or feel more sensitive than usual. Sometimes the skin can blister and weep and cause pain or swelling. For pelvis treatment, this usually affects the skin between your legs and around your back passage. For anal cancer treatments, the skin in your groin area will also be affected.

Reduced appetite, nausea and vomiting

You may feel sick (nausea) or be sick (vomit) from the radiotherapy. The chances of this is higher if you have chemotherapy at the same time.

Hair loss

You will lose hair in the treated area only. Hair should start to grow back in 8 to 12 weeks after radiotherapy has finished. Sometimes hair loss can be permanent.

Fatigue/tiredness

The amount of tiredness varies for each person. It usually builds up over the course of your treatment. Many people are still able to continue working and carry out their usual activities during radiotherapy.



Potential long-term side effects

Most men recover well from their radiation treatment. They do not experience side effects that have a major impact on their quality of life.

Bowel changes

For some people, their bowel habits do not return completely back to normal after treatment has finished.

You may have:

- An urgent need to open your bowels
- Pain when opening your bowels
- A small amount of bleeding or discharge
- Diarrhoea
- Constipation
- Leakage or less control over your bowel motions (incontinence).

Bladder changes

Radiotherapy can cause changes to the lining of your bladder in the long-term. You may have:

- Discomfort and burning when you urinate
- An urgent need or pass urine more often
- Leakage or less control over your bladder (incontinence)
- Bleeding.

Sexual Function

The following changes may occur:

- Radiotherapy can cause you to not be able to have an erection. This is more common in men who have radiotherapy before or after surgery to the pelvis
- You may have less or no ejaculation (semen). You may feel a burning sensation or pain on ejaculation. The semen may be darker in colour or occasionally contain blood.
- There is a possibility the radiotherapy can make you infertile. If this is a concern, let your radiation oncologist or clinical nurse consultant know. We can talk through options such as sperm banking.

Pelvic fracture

Radiotherapy can make bones brittle in the area you receive treatment (pelvis and hips). You may fracture your pelvis or hips months (or years) after radiotherapy. This is more likely if you have osteoporosis. However, the risk is usually low.

Swelling (lymphoedema)

Swelling of the legs can occur. This is because the lymphatic drainage does not work properly after radiotherapy. However, the risk is usually low.

Rare side effects

Second cancer

The risk of the radiotherapy causing a second cancer is extremely rare. If it does cause a second cancer, it will be in the treated area. It may not happen until at least 10 years after treatment.

The chances of your cancer recurring without radiotherapy are higher than the risk of developing a cancer from radiotherapy.

Bowel changes

Rarely, the tissue surrounding the bowel can stick together (adhesions), causing a blockage (bowel obstruction). Even more rarely, a hole (perforation) could develop in the bowel. These problems often require hospitalisation and surgery. The risk of bowel obstruction or perforation is higher if you have had surgery as well as radiotherapy and chemotherapy.

Notes

How to prepare for my planning appointment and treatment

This generally involves bowel and bladder preparation.

It is important to follow these instructions to reduce the side effects before your planning appointment and every day of your treatment.

Occasionally, this preparation is not necessary and your doctor will explain to you if this is the case.

One of things we need to prepare for your treatment is your bowels.

- We need your **bowels empty** and as little gas as possible for your planning appointment and every day of your treatment
- We will ask you some questions about your bowel habits to help us book your planning and treatment appointment times.

If you have a stoma, make sure your stoma bag is empty prior to your planning appointment.

Follow these tips daily to help reduce gas

You will need to do this:

- 2 days before your planning appointment
- 2 days before your first treatment appointment and throughout the rest of your treatment.

Eat regular meals/snacks

- Do not skip meals
- Avoid long gaps between meals/snacks.

Eat slowly

- Chew well with your mouth closed
- Do not talk while you are chewing/eating.

Drink fluid slowly

- Sip rather than gulp
- Try not to eat and drink at the same time.

Drink plenty of water throughout the day before your planning and during your treatment. The recommended amount is 2-3 litres per day.

Do some regular gentle activity such as a daily walk.

Avoid the following

- Smoking
- Chewing gum
- Foods or drinks that make you burp a lot
- Avoid fizzy / carbonated drinks (e.g. soft drink, beer, sparkling water)
- Foods that make you feel windy or bloated after you eat them.

Some good tips to help pass wind - try for about one minute

- Sit on the toilet and lean forward so that your knees push onto your chest
- Squat down (hold onto something to keep yourself steady) so your knees are against your belly
- If you are unable to squat, try to bring your knees to your chest while lying down.

Radiotherapy planning appointment

On this day we will make equipment to keep you still, take a CT scan and mark the treatment area.

Please allow 1 to 2 hours for this appointment.

Tell the planning radiation therapist when you arrive if:

- You have not emptied your bowels within 2 to 3 hours of your appointment or,
- Your bowel habits have changed since you saw your radiation oncologist.

If this does not apply to you, this would have discussed with your radiation oncologist at your first appointment.

If you have a stoma, make sure your stoma bag is empty prior to your planning appointment.

At the planning appointment

You will be given information on the radiotherapy process and side effects. It is important to understand what is going to happen

The radiation therapist will provide information on how to prepare your bladder specific to your body (how much water to drink).

You will also be given survey to complete that will take 5 to 10 minutes. The survey will ask you questions about your health and wellbeing.

An appointment card with your start date and time for your radiotherapy treatment will be given to you.

Identity check

Before we can start, you will be asked to tell us:

- Your name
- Your date of birth
- What area on your body will be treated with radiotherapy.

This is a NSW Health requirement and helps us to identify you. It confirms we are treating the right person and part of your body. We will ask you this every day when you attend your radiotherapy treatment.

During the planning appointment

You will be asked to remove your shoes. You will be given blue socks to put on over your own socks at the beginning of the appointment.

Once you are on the CT scanner bed you will be asked to lower your trousers and underwear so the radiation therapist can see your skin and be able to position you.

Your radiation oncologist may want to give you an injection, this is called contrast. This will help them see the area to be treated on the CT scan, we will talk to you about this on the day of your planning appointment.

There are 3 steps to the planning appointment:

1. Make equipment for your treatment
2. Take a CT scan of the treatment area
3. Create tattoos and photos.

1. Equipment

We will use equipment that helps you to be stable and still for your treatment.

You will lie on the CT scanner bed on your back, with your legs and feet on a piece of equipment (called a footfix).

We may also use a jelly like or pink material that will lie on your skin where you are being treated, this is called bolus. We use this when we need the radiation dose close to your skin. This is not used for everyone.

CT Scanner with footfix



Example of bolus

2. CT (computed tomography) Scan

Texta and sticky markers will be placed on your skin before the CT scan. These help us to map out the treatment area and can be seen on the scan.

A CT scan will be taken of your pelvis area.

You will need to lie still and breathe normally during this scan.

The staff will leave the room while the scan is being performed.

This scan is used to plan your treatment.

When we take the CT scan we will check the size of your bowel and bladder. We may need to ask you to come back another day for the scan if the size of your bowels and bladder are not ideal. This will not happen for everybody.

3. Tattoos and photos

You will be given small permanent tattoos at the end of the planning appointment. These make sure we put you in the same position on the treatment bed each day.

We will take photos of how you have been set up and the equipment that has been made for your treatment. These also help treatment staff set you up in the same position each day.




This is the approximate size of the tattoo.

At the end of the appointment we will give you a fridge magnet to remind you of how to prepare for your radiotherapy treatment.


It is very important that you follow these instructions every day of your treatment.


Daily Bowel and Bladder Preparation for Radiation Treatment



1 hour before your appointment time go to the toilet; empty your bladder and if you haven't already try and empty your bowels.


_____ **Minutes** before your appointment time, start drinking your _____ mls of water.





Finish drinking your water within 5 minutes.

Do not go to the bathroom until after your treatment. If you are having difficulties holding please inform staff.



Example of fridge magnet with your preparation instructions

Radiotherapy planning



Your radiation team will create a plan for you between your planning appointment and the start of your treatment.

The CT scan that was taken at your planning appointment is used to create the plan. It is designed specifically for you. This can take up to 2 weeks depending on how difficult the individual plan is.

Sometimes the start of treatment can be delayed due to the difficulty of the plan.

Many checks are completed to make sure we are going to be delivering the right treatment for you.



Radiotherapy team

Notes



A series of horizontal lines for taking notes, separated by a wavy line from the header area.

Radiotherapy treatment



You will receive radiotherapy daily. You will be set up in the same position as your planning appointment. It will take 10 to 25 minutes for your treatment.

At the planning appointment you would have been given instructions and a fridge magnet on how to prepare for your treatment.

It is very important that you follow these instructions **every** day of your treatment.

If you are unsure about what to do, arrive 1 hour before your appointment and staff can assist you with these instructions.

When you arrive for your appointment you need to have:

- Filled your bladder
- Emptied your bowels.

Please tell staff when you arrive if:

- You have not been able to empty your bowels before your appointment
- Your bowel habits have changed.

If you have a stoma, make sure your stoma bag is empty prior to your treatment appointment.

Treatment times

Your treatment time will be booked around your bowel motions, so we can make sure you have empty bowels.

Treatment is usually given 5 days a week from Monday to Friday.

A list of appointment times will be given to you every week. **Please check these because your appointment times may change.**

On some days the treatment machines will need to be closed for maintenance. We will let you know of these days ahead of time and put signs outside the treatment room to remind you. Some people still need to receive treatment on maintenance days. **Treatment staff will let you know if you will be having treatment on these days.**

If you need to change an appointment time, please tell the radiation therapists as soon as possible so we can try to arrange a better time. This will also need to fit around the timing of your bowel motions.

It may not be possible to change your appointment times because there are many other patients also receiving treatment.

If you are running late or unable to make it to your appointment, please notify the radiation therapists on your treatment machine as soon as possible.

Your first treatment appointment

On your first day please arrive 15 minutes before your appointment time and see the nurses at the nurse's desk before you sit down.

A radiation therapist will explain what will happen and answer any questions you may have.

Your first treatment is usually longer than your other appointments as we need to check measurements from your planning appointment.

Please allow 1 hour on your first day. This will allow us to give you all the information you need and deliver your treatment.

Arriving in radiotherapy

Please check yourself in for your treatment. You do this by scanning the barcode on your appointment card at the nurse's desk. If it is not your first treatment, once you have checked in you can take a seat in the waiting room.

A radiation therapists will come and get you when they are ready for you to have your treatment.

How long will my treatment take?

The time needed to deliver your treatment can be between 10 to 20 minutes.

The time in the treatment room includes:

- Getting you into the correct position
- Delivering your treatment
- Helping you in and out of the room.



Pelvis patient on the linear accelerator

In the treatment room

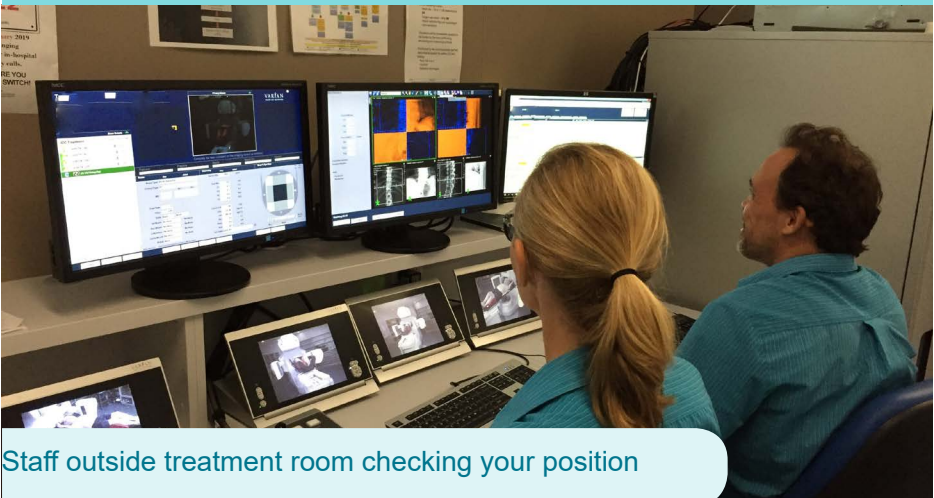
During your treatment you are able to listen to music. We can make a playlist for you, or you can bring in your own music if you like.

The radiation therapists will position you using the same equipment used in your planning appointment.

Once you are in the correct position, the radiation therapists will leave the room to start the treatment. We can see and hear you during the treatment (the room has television monitors and an intercom).

When the radiation therapist leaves the treatment room:

- You will be in the room by yourself for 5 to 10 minutes
- It is important to lie still during the treatment and breathe normally
- Parts of the machine will move into position to take x-rays. These x-rays are taken before we give you your treatment to make sure everything lines up and we are treating the correct area
- The treatment machine moves around you to give you your treatment, but it does not touch you
- You can alert us at any time by talking or raising your hand
- You will not be able to see or feel anything during the treatment. However you will hear a noise when the machine turns on.



Staff outside treatment room checking your position

During your course of radiation treatment

Any bladder and bowel preparation given to you by the radiation staff at planning and your first treatment, needs to be followed for **every** treatment. **Tell the staff as soon as possible if you are not able to follow this preparation.**

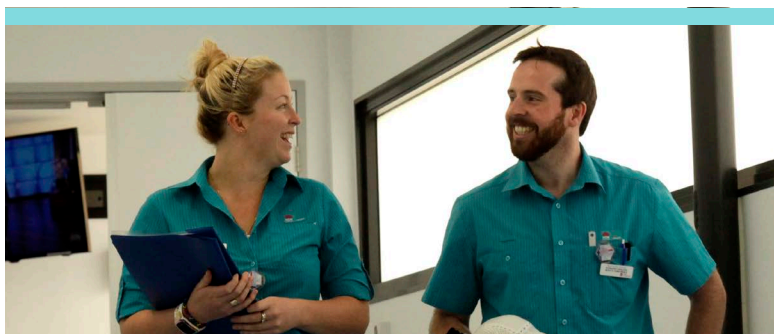
You will have x-rays taken throughout your treatment. This is to check the position of the treatment area. The x-rays are not used to check how treatment is working.

We also check the size of your bowels and bladder. If they are different to the planning appointment we may give you instructions to follow. You may need to wait longer for us to deliver your treatment.

It is important to try and maintain your weight during treatment, any major changes in the shape and size of your body may change our calculations and a new CT scan will be required.

Our radiation team will check on your well-being and side effects daily.

If you need more help, staff can arrange for you to see other staff in your radiotherapy care team.



Please tell the radiotherapy team about side-effects or any other problems that you may be having. It is important that we know this information.

Managing side effects during treatment



Side effects generally do not start until 2 to 3 weeks into your treatment. In most cases these symptoms will settle 2 to 4 weeks after completing radiotherapy.

Please let staff know if you notice any changes in the treatment area. They may be able to help you manage these symptoms.

Please talk to radiation staff before attempting to take any medications for your side effects.

If you are unable to, or find it hard to pass urine, please urgently contact your radiation oncologist, clinical nurse consultant, or your local general practitioner.

Out of hours go to emergency department if you have a temperature, uncontrolled diarrhoea, feel dizzy and/or lightheaded and generally feel unwell.

Bladder changes

Please tell staff if you notice burning, passing urine more often, less control or pain when passing urine, or blood in urine.

To help with burning when passing urine:

- Drink plenty of fluids (daily recommendation is 2 to 3 litres); unless you have been on fluid restriction
- You can start taking Ural if the burning becomes uncomfortable (available from a supermarket or chemist without prescription). Start taking sachets two times a day and increase this to four times a day if needed. Please let your treatment staff know if you are using Ural.
- Cranberry juice may also help with discomfort when passing urine
- Avoid large amounts of tea, coffee, alcohol and citrus fruit juices.



Bowel changes

Please tell staff if you notice any changes in your bowel habits.

Diarrhoea:

- Avoid or reduce your intake of spicy foods, dairy products, alcohol, fatty foods, high-fibre foods and coffee
- Drink 2-3 litres of fluid each day
- Try the BRAT diet: bananas, rice, applesauce, toast.

It is important to be careful with anti-diarrhoea medicines. Your bowels should be as empty as possible during treatment. Please talk to the radiation staff or call your clinical nurse consultant **before** taking anything.

Stoma

You should follow the information about reducing bowel gas and managing diarrhoea.

If you notice a change in your bowel habit, talk to your radiation team. They can give advice on how to manage this.

Some people with a stoma experience mucous discharge or a mucous plug from your back passage during treatment. If you are concerned please notify staff or your clinical nurse consultant.

Swelling (lymphoedema)

You can get a referral to a physiotherapist to provide extra support and advice.

A pelvic health physiotherapist can help you manage your side effects for bladder, bowel, stoma and sexual function. Your radiotherapy team can arrange a referral.

Fatigue/tiredness

To help manage your tiredness during your treatment:

- Try some light exercise when you are feeling least tired during the day
- Keep a diary to see what time of the day you are most tired
- Listen to music/read books
- Meditate or use relaxation exercises
- Spread out and prioritise what you need to get done over the day
- Ask others for help
- During the day, rest when you need to, but not for longer than 45 minutes.

Reduced appetite, nausea and vomiting

Please talk to a member of your health care team if you are experiencing this. Medication can be given to relieve these symptoms.

Sexual function

- There is no need to refrain from sexual activity either during or after the treatment
- If there is a chance that your partner may become pregnant, it is important to use contraception during your radiotherapy and for 12 months after. Radiotherapy can change your sperm cells during this time
- Your ability to have erections can be affected. The treatment can damage the nerves that control erections
- Occasionally you may feel a burning sensation on ejaculation
- The cancer and the radiation treatment will not harm your partner.

Skin

Sorbolene will be given to you on your first day of treatment and can be applied as often as you like to the treatment area. **Do not apply within two hours of treatment.**

Do not use any other products on your skin in the treatment area without checking with your doctor or radiation staff first. Other products may make any reaction worse.

Please inform staff if you notice any pain or discomfort of the skin in the treatment area.

SITZ Bath

Some people find having a SITZ bath can help with the burning, itching and irritation of the skin. It also helps to keep the area clean.

A SITZ bath is a warm, shallow salt bath that cleans the area around your back passage. Use 1 cup of table salt in the shallow bath, making sure the water is not too hot so the skin will not be scalded.

It is important to keep the area clean and follow the **general skin care guidelines** during your radiation treatment.

General skin care during your treatment



Wear loose clothing during treatment



Have a SITZ bath as often as you like. Use warm water, rather than hot.



Wash gently with mild soap (such as Dove Sensitive Skin Unscented®, Aveeno Moisturising Bar®, Goat Milk or other unscented soap) and rinse well



Gently pat dry the treatment area with a clean towel



Use sorbolene on the skin in the treatment area. You can place sorbolene creams in the fridge to help soothe the area



Do not apply any soap, oils, perfumes, lotions or talcum powders to the treatment area



Do not shave the pelvic area. This can cause tiny breaks in the skin and make the area more prone to infection



Avoid wearing tight fitting underwear and pants



Do not rub the area or scratch if your skin is itchy

Notes

After radiotherapy



On your last day of treatment a follow-up appointment will be booked with your radiation oncologist in 4 to 6 weeks.

Any side effects that you have had during your treatment will start to improve around two weeks after your treatment has finished.

Last treatment

On completing your last treatment we will:

- Ensure you have enough supplies of any dressings you have been using
- Make sure any side effects you are having are being managed
- Tell you who to contact if you have any treatment related problems
- Book the community health nurse if you require help with dressings
- Make a follow-up appointment for you with your radiation oncologist in 4 to 6 weeks after your radiotherapy.

Other appointments

For those who require surgery, you will need to see your surgeon following completion of your treatment. If you do not have this appointment please contact your clinical nurse consultant.

Side effects

Any side effects you were experiencing at the end of your radiotherapy treatment may continue for weeks to months after.

Please refer to the potential long-term side effects section at the beginning of this booklet.

Continue with any medications, baths, creams or dressings you have been using to manage your bladder, bowel and skin reactions.

If any side effects worsen from two weeks following your last treatment please contact your radiation oncologist or your clinical nurse consultant.

Follow up appointment

Your first follow-up appointment with your radiation oncologist will be 4 to 6 weeks after you have finished your treatment. This will have been booked on your last day of treatment.

At this appointment your radiation oncologist will:

- See how you are going with any side effects you may have been experiencing during your radiotherapy treatment
- Make sure everything is going well and to answer any questions or concerns you may have
- Make sure you have any relevant appointments to see surgeons and/or medical oncologists.

After this appointment you will need to attend regular follow up reviews. They will be every few months for several years. These are important to make sure everything is going well and to answer any questions you may have.

Frequently asked questions



Will radiation therapy be painful?

While treatment is being delivered, you will not see or feel anything. The delivery of radiation is like having an X-ray or CT scan. You will hear the machine making a buzzing sound.

Will I be 'radioactive'?

No, receiving radiotherapy will not leave you radioactive at any time. It is safe to be with family, children, friends and pregnant women.

Should I take medications and/or vitamins while receiving treatment?

It is important to tell your radiation oncologist all the medicines, supplements and vitamins you are currently taking. Continue to take your prescribed medicines as normal. Some vitamins or supplements could impact on the treatment.

Will I lose my hair?

Radiotherapy only effects the area being treated. You may have hair loss around the pelvis area. You will not lose the hair on your head.

Can I have a flu or tetanus vaccination?

Yes, it is safe to receive these while you are having your treatment.

Where can I park during treatment?

Free parking is available while you are having your treatment. You can park outside the Cancer Care Centre, on New Dapto Road at the Illawarra Cancer Care Centre. You can park at the rear of the Shoalhaven Cancer Care Centre. Go to the boom gate and dial the intercom at your first treatment. Please ask staff for more information.



Is there transport available?

There are public transport options available. You would have received this information before your consultation with the Radiation Oncologist.

There is community transport for those people that have difficulty. There may be a small fee. Please ask staff for more information.

How long will treatment take?

The length (or course) of radiation is based on the specific plan designed for you by your doctor. Generally, you will be in and out of the centre within 30 minutes. Delays may occur on some days.

How much does my treatment cost?

Medicare covers all costs.

Is it a problem if I miss a scheduled treatment?

Radiation treatment is designed to be delivered as small daily treatments to get the best outcome. Once treatment has started it is important that the rest are not delayed or missed. Sometimes medical reasons can cause a treatment to be delayed or missed, your Radiation Oncologist will discuss this with you.

What should I wear to treatment?

Wear loose fitting cotton clothes. Don't wear clothes that are tight or that may rub the area.



Can I get the treatment area wet or go swimming during treatment?

Showering / swimming in salt water is fine. Swimming in chlorinated pools is not recommended. Pat the skin dry, do not rub it.

What happens if I lose/gain weight while I'm having my radiotherapy?

The Radiation Therapists will monitor any changes in your body shape during your treatment. They will take measurements each day. If your body changes too much a new plan may be needed.

What if i need accommodation whilst having treatment?

We have onsite accommodation available at both centres, please ask staff for more information.

Other resources



Online resources for additional information about your radiotherapy:

The Illawarra Shoalhaven Cancer and Haematology Network (ISCaHN)
-<http://www.islhd.health.nsw.gov.au>

Targeting Cancer – www.targetingcancer.com.au

Cancer Council – www.cancer.org.au/about-cancer/treatment/radiotherapy.html

eviQ Cancer Treatments Online - www.eviq.org.au/eviQNavigationPatientsandCarers.aspx

Continence Foundation - <https://www.continence.org.au>

Australasian Lymphology Association - www.lymphoedema.org.au

National Public Toilet Map - <https://toiletmap.gov.au>

Bowel Cancer Australia - <https://www.bowelcanceraustralia.org>

Beyond Blue - <https://www.beyondblue.org.au>

Cancer Australia - <https://canceraustralia.gov.au>

Australian Council of Stoma Associates - <https://www.nps.org.au/.../australian-council-of-stoma-associations>

Ask your clinical nurse consultant for more recommended information and resources

Cancer Council information

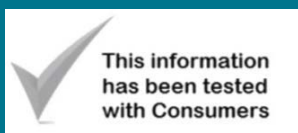
Cancer Council information centers are located on Level 2 at the Illawarra Cancer Care Centre and the main foyer at the Shoalhaven Cancer Care Centre

There is a range of information and volunteers available to assist at both centres.

If you would like to provide feedback on this booklet,
please email it to

ISLHD-ISCAHN@health.nsw.gov.au

The printing of these books has been kindly funded from donations to the cancer centres.



Published: August 2019

Updated: October 2020

Reference: DT18/131859