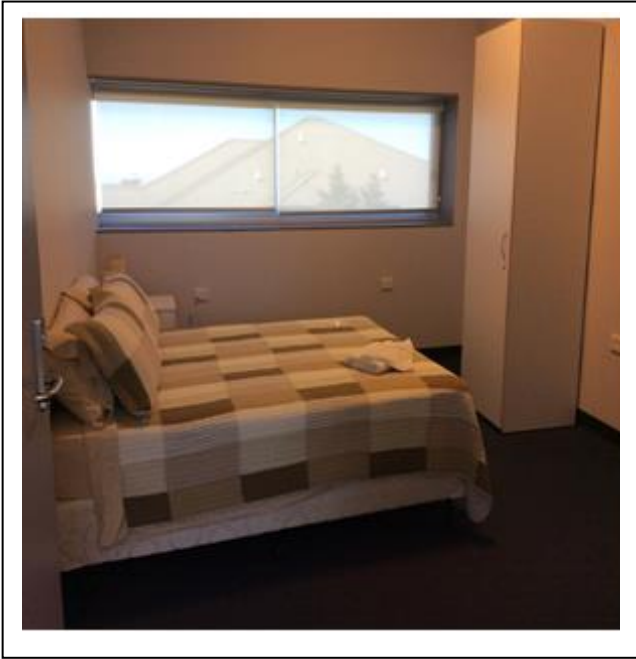


ISHEC - Accommodation



Three single occupancy bedrooms are available for short term accommodation for visitors attending education and training in the Education Centre.

The accommodation includes:

- A private queen sized bed in every room.
- Communal facilities (kitchen and bathroom).
- A light breakfast pack
- All bed linen and towels
- No toiletries provided
- An on-site car parking space – depending on availability

Conditions

Non smoking/ ETOH etc NSW policy

Fees structure:

\$75.00 + GST - 1st night = \$82.50

\$70.00 + GST - 2nd night = \$77.00

\$65.00 + GST - for 3rd and subsequent nights = \$71.50

Fees are subject to change at short notice so please contact the centre as below to confirm.

For further information or for bookings please contact the Illawarra Shoalhaven Health Education Centre on:

Telephone: 02 4254 3666

Email: islhd-hecbookings@health.nsw.gov.au